

# Welcome to Year 3



Miss Norris, Mrs Doherty and Mrs Johns/Mrs Gregory



# Our Teaching Assistants

Mrs Snaith

Mrs Hayman

Miss Jones

Miss Mack



# Our Week

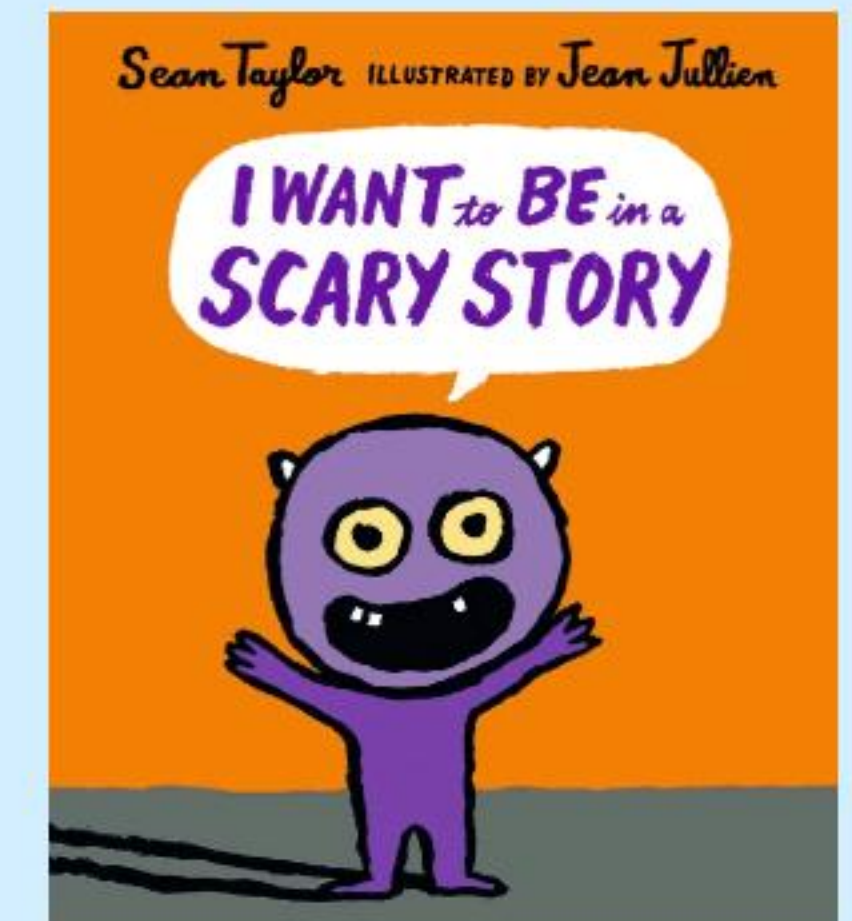
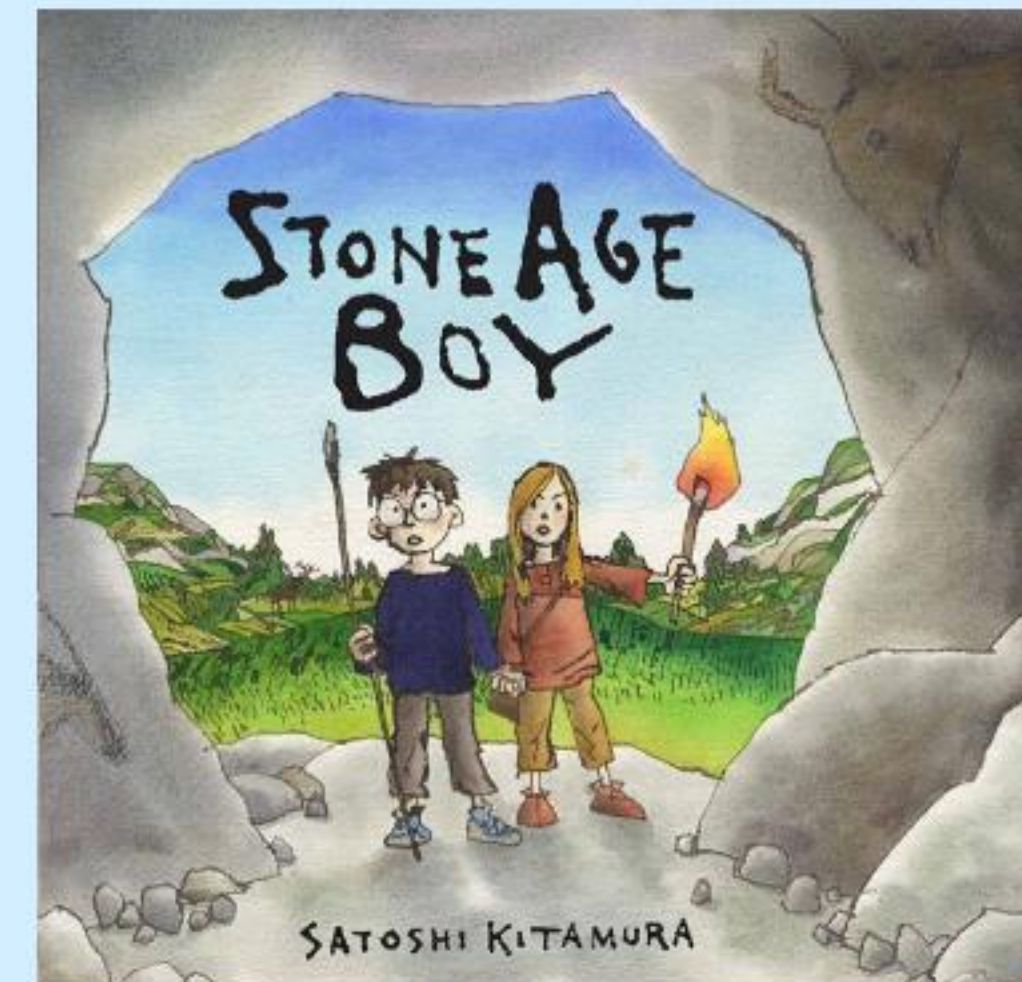
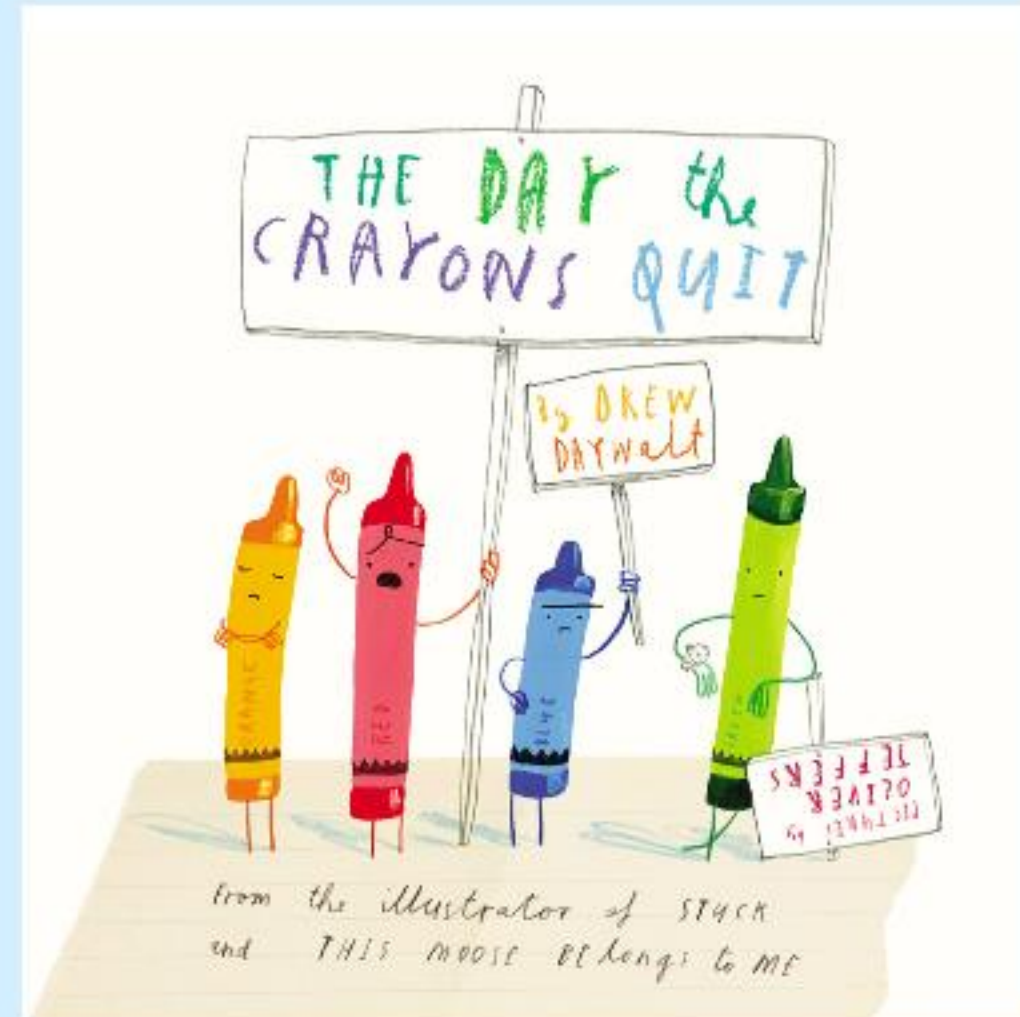
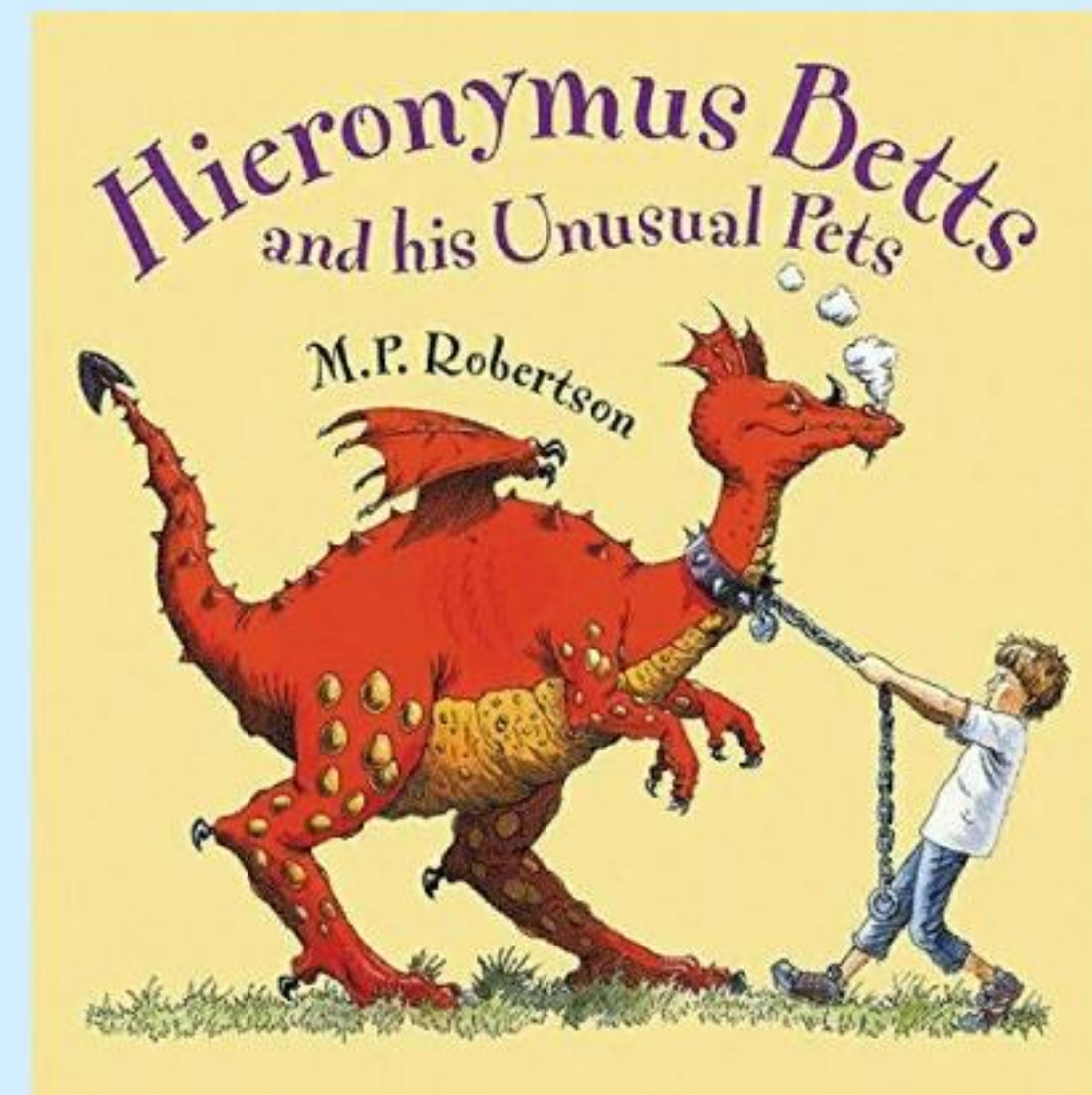
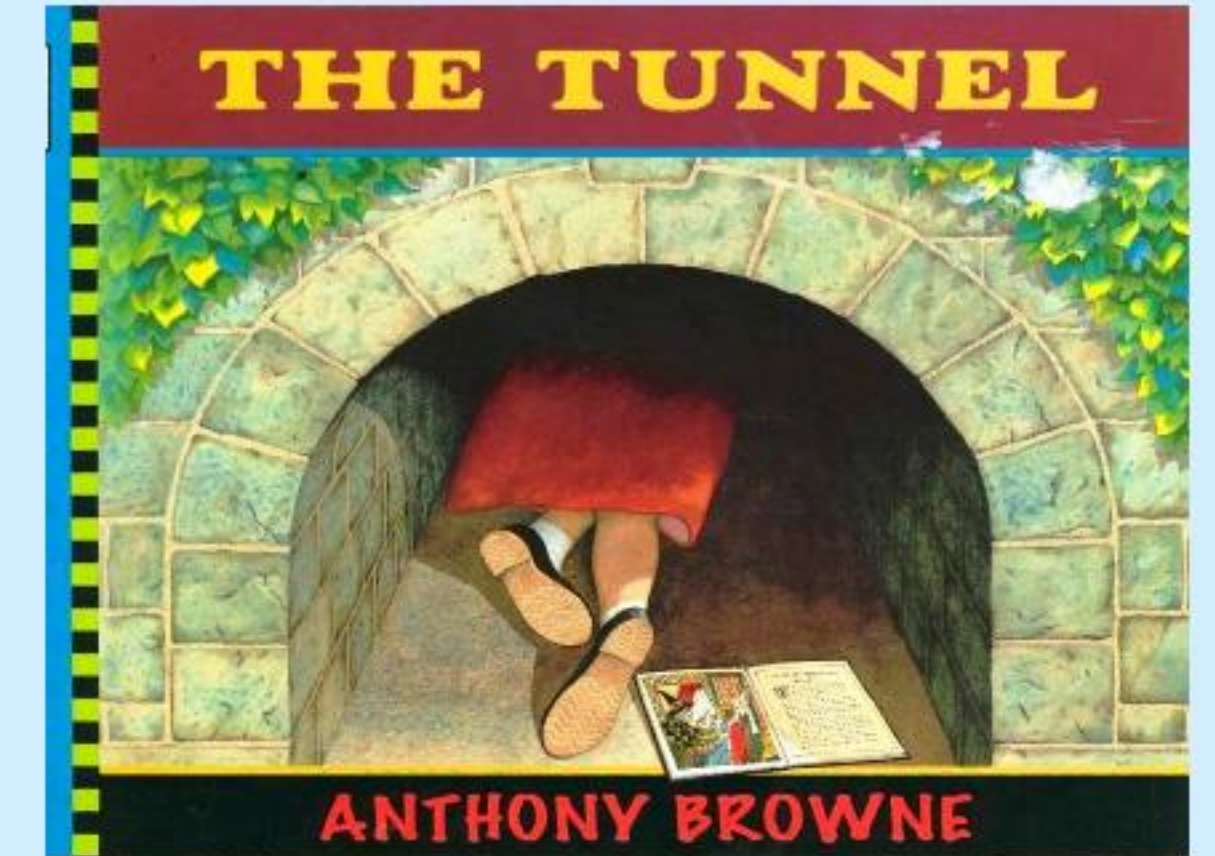
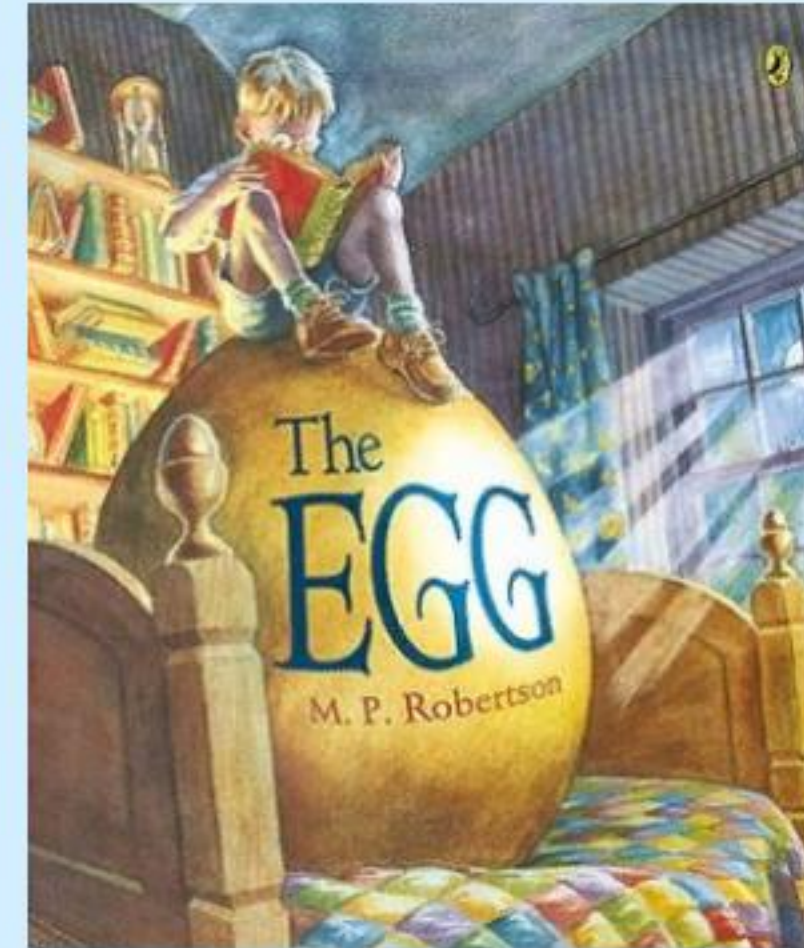
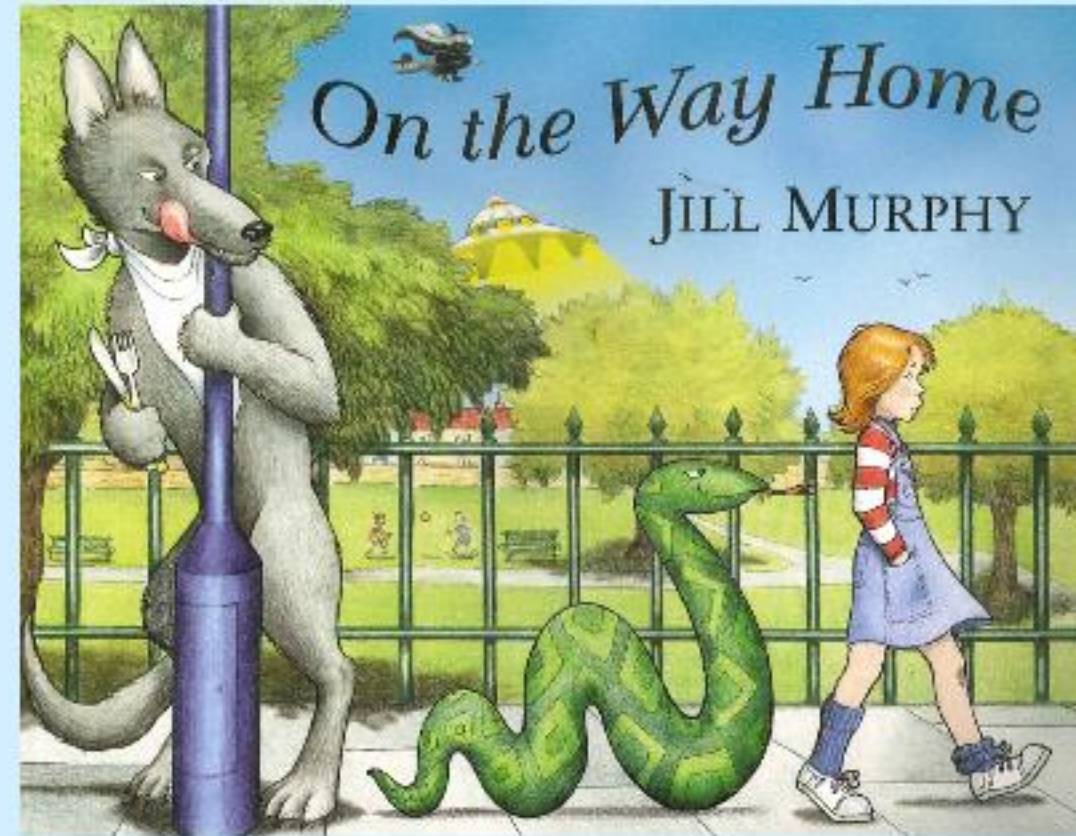
Curriculum information on website.

| Year 3 |              |                |               |                |                |                |               |              |               |                |              |
|--------|--------------|----------------|---------------|----------------|----------------|----------------|---------------|--------------|---------------|----------------|--------------|
|        | 8.55<br>9.00 | 9.00<br>9.30   | 9.30<br>10.30 | 10.30<br>10.45 | 10.45<br>12.00 | 12.00<br>12.50 | 12.50<br>1.00 | 1.00<br>1.20 | 1.20<br>2.20  | 2.20<br>3.00   | 3.00<br>3.15 |
| Mon    | Register     | Guided Reading | Maths         | Break          | Literacy       | Lunch          | Register      | Phonics      | Science       | ASSEMBLY 2.30  | Class Novel  |
| Tues   | Register     | Guided Reading | Maths         | Break          | Literacy       | Lunch          | Register      | Phonics      | Science       | RE/Computng    | Class Novel  |
| Wed    | Register     | PE             |               | Break          | PE             | Lunch          | Register      | Phonics      | Literacy      | Music/PSHE     | Class Novel  |
|        |              |                |               |                | Class Novel    |                |               |              | Maths         |                |              |
| Thurs  | Register     | Guided Reading | Maths         | Break          | Literacy       | Lunch          | Register      | Phonics      | History /Geog | Homework tests | Class Novel  |
| Fri    | Register     | Guided Reading | Maths         | Break          | Literacy       | Lunch          | Register      | Phonics      | Art/DT        | Assembly 2.30  | Class Novel  |

Art/DT and RE/Computng can be swapped depending on topic



# What do we read in Literacy?





## History/Geography

- The Victorians
- Angry Earth
- Ancient Greece
- Stone Age
- The Mediterranean



## Science

- Forces and Magnets
- Rocks
- Animals inc. humans
- Plants
- Light







Lost RR = £3

This is a whole school initiative which focuses on vocabulary.

Each class has a display dedicated to exciting new vocabulary .

Week Beginning: 14th November 2022

Home Reading


Monday

Tuesday

Wednesday

Thursday

Are you a Green Reader?



Weekend Reading

Reading at School

Date and Initial

Homework

Maths

Spelling

Other

Maths:

☐ Maths Homework complete and returned  
☐ Maths incomplete  
☐ Maths not returned

Spelling:

☐ Spelling Homework complete and returned  
☐ Spelling incomplete  
☐ Spelling not returned

Teacher Signature:

Parent Comment/ Signature

Spelling Score

Word Aware



Every WEDNESDAY... PE kit!

Please name ALL kit



A black tracksuit will be needed for the colder months as PE will be outside if possible. PE kit will stay in school until the end of the half term and returned in the last week.



Every FRIDAY, return on a THURSDAY.. Homework!

- Times Tables Rockstars
- Purple Mash
- Reading Wise
- Google Classroom

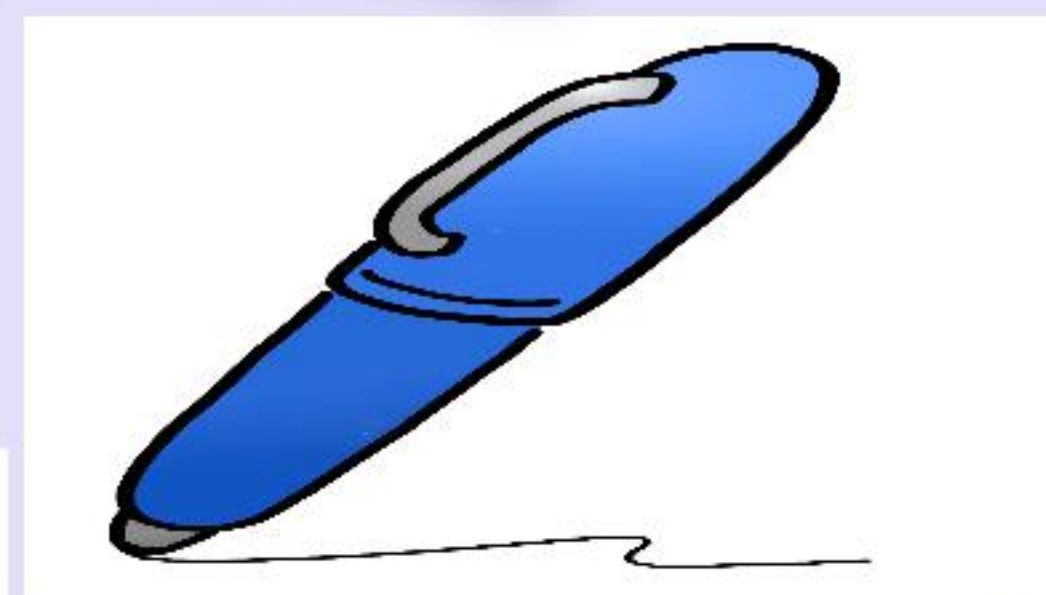
- RM easimaths





Rewards

Gold  
Cards!



School  
values

STAR OF THE  
WEEK





# Whole School Rules

## OUR GOLDEN RULES

1. We are gentle
2. We are kind and helpful
3. We are honest
4. We work hard
5. We look after property
6. We listen to people

### Five Finger Rule

1. Ignore behaviours.
2. Ask politely to stop.
3. Tell them to stop.
4. Warn you will tell.
5. Tell the teacher.









