

# Welcome to Year 4



## Our Year 4 Staff

### Class Teachers

Miss Clare

Miss Fisher

Miss Dixon

### Teaching Assistants

Miss Jones

Mrs Spampi

Mrs Whitehouse

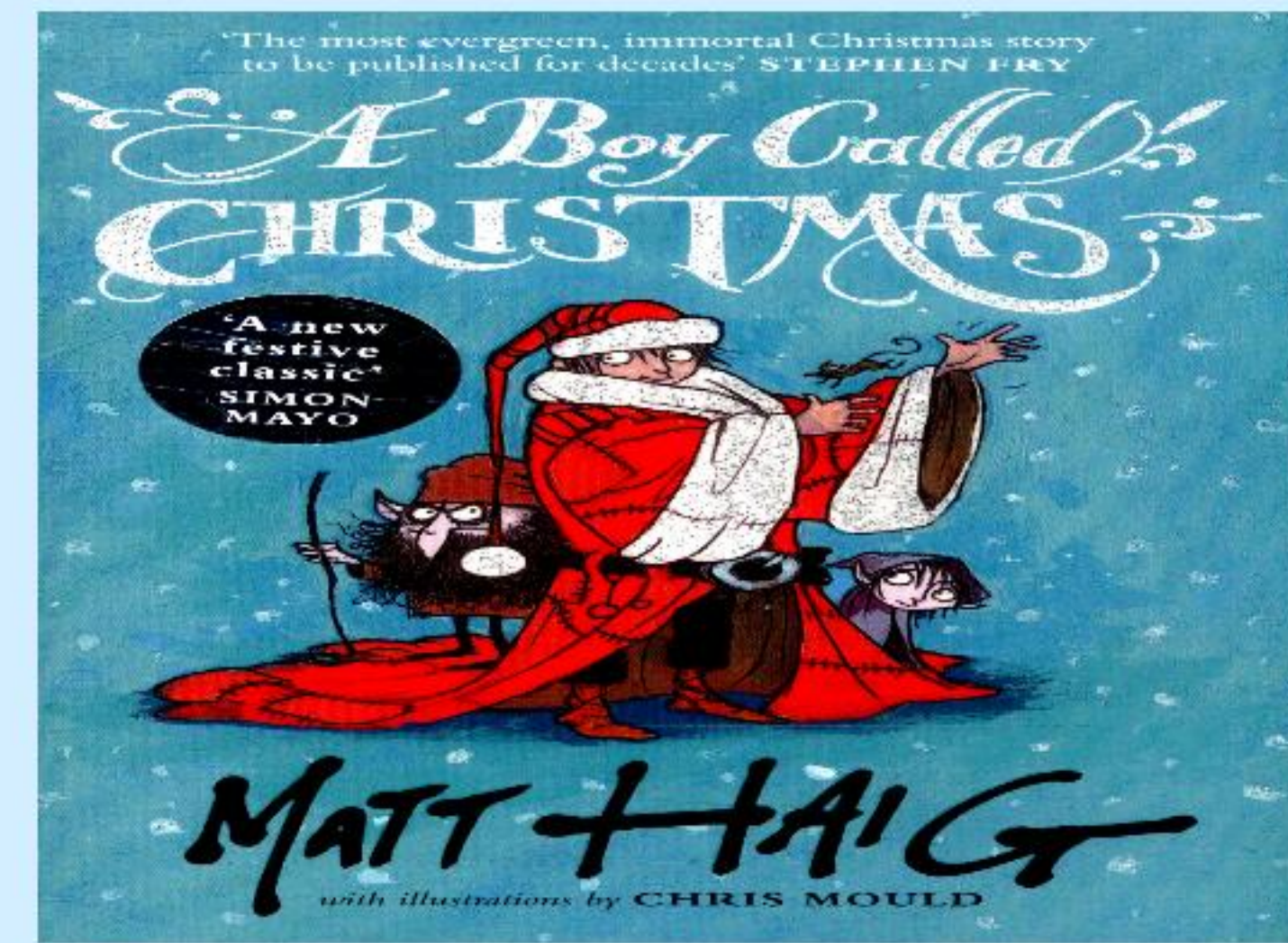
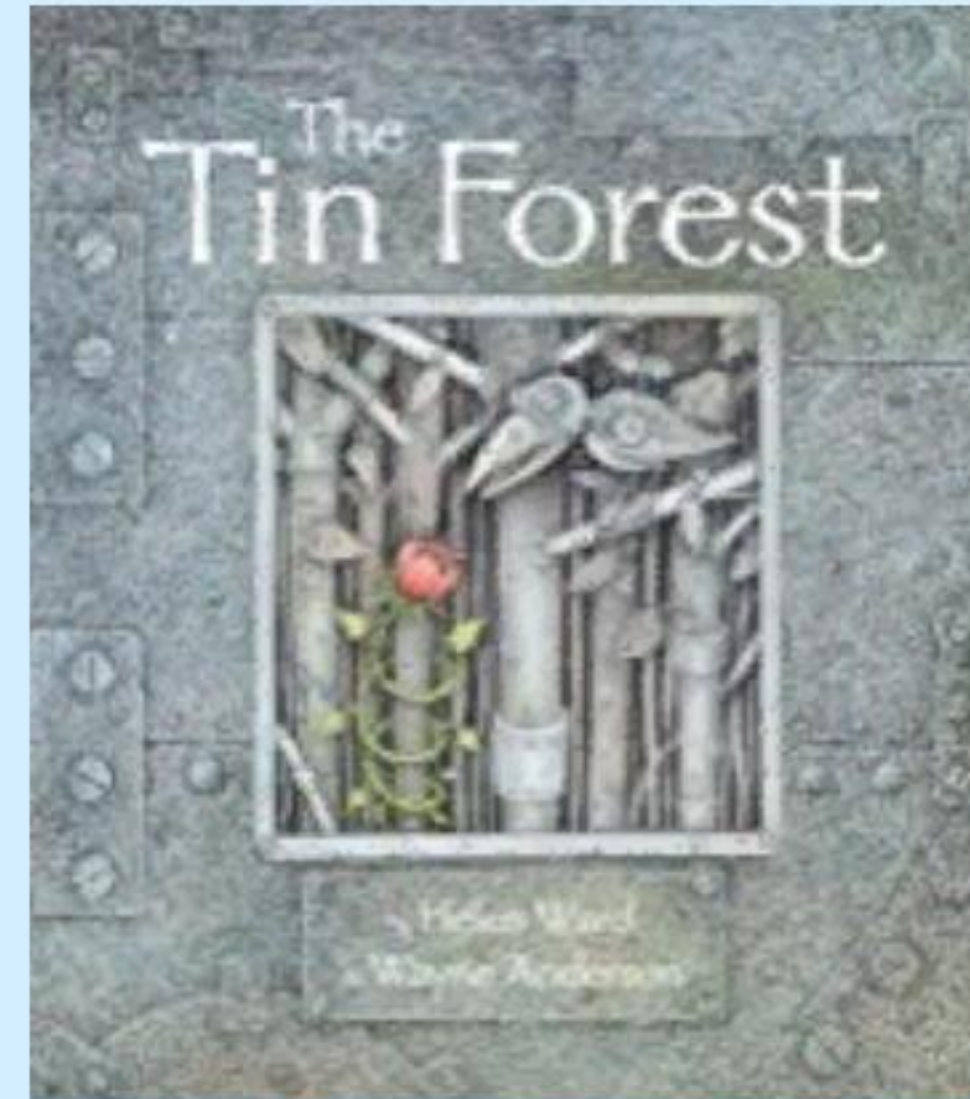
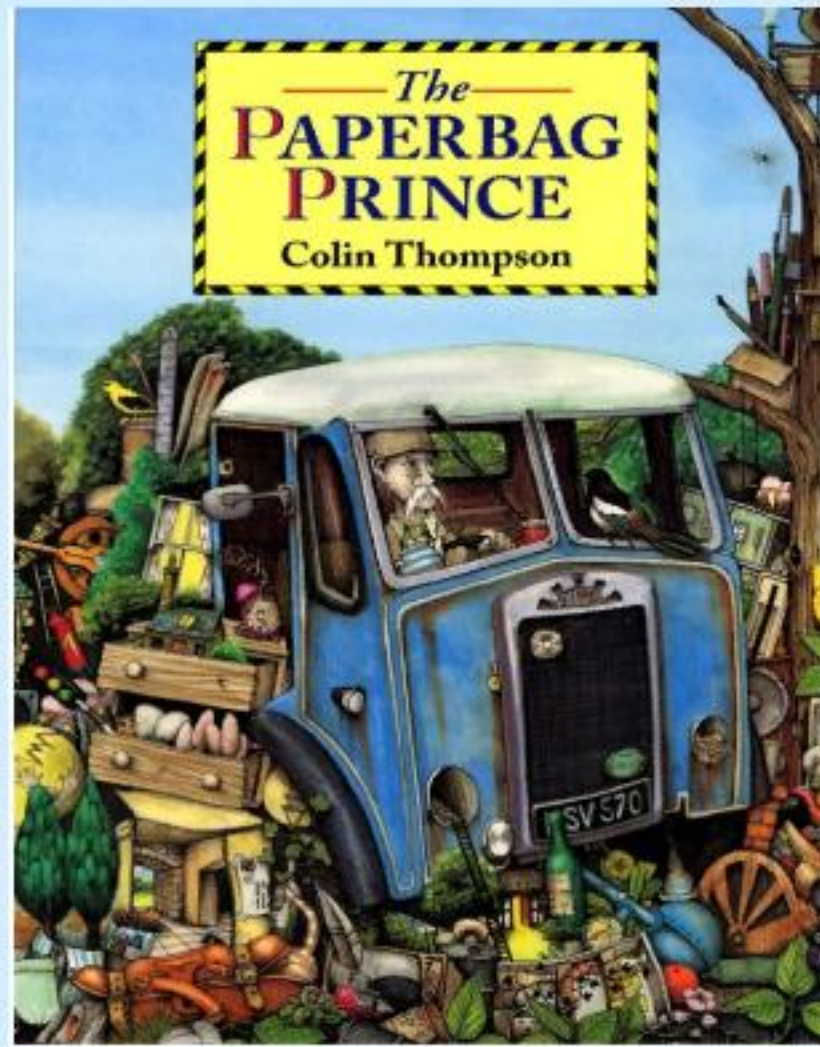


# Our Week

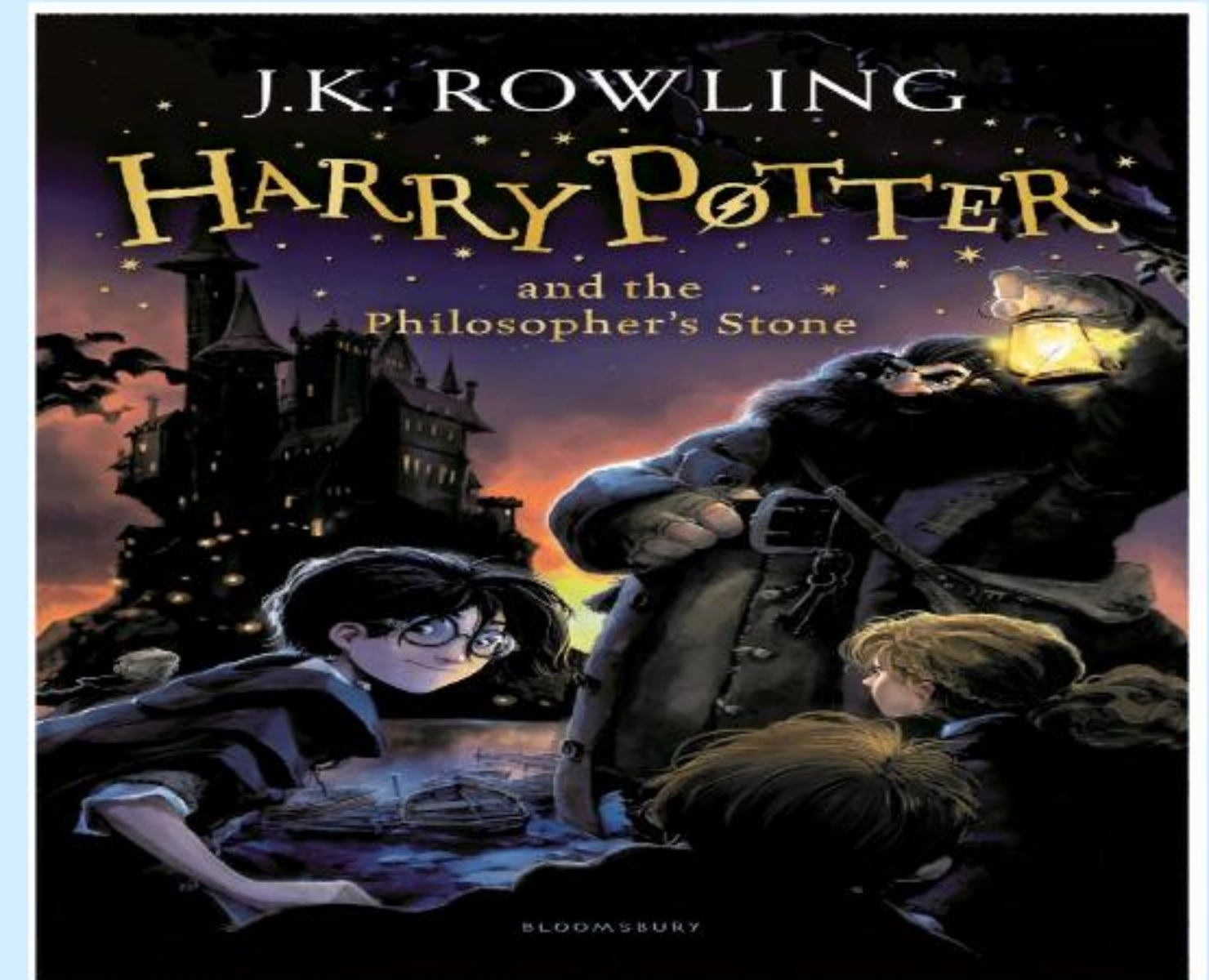
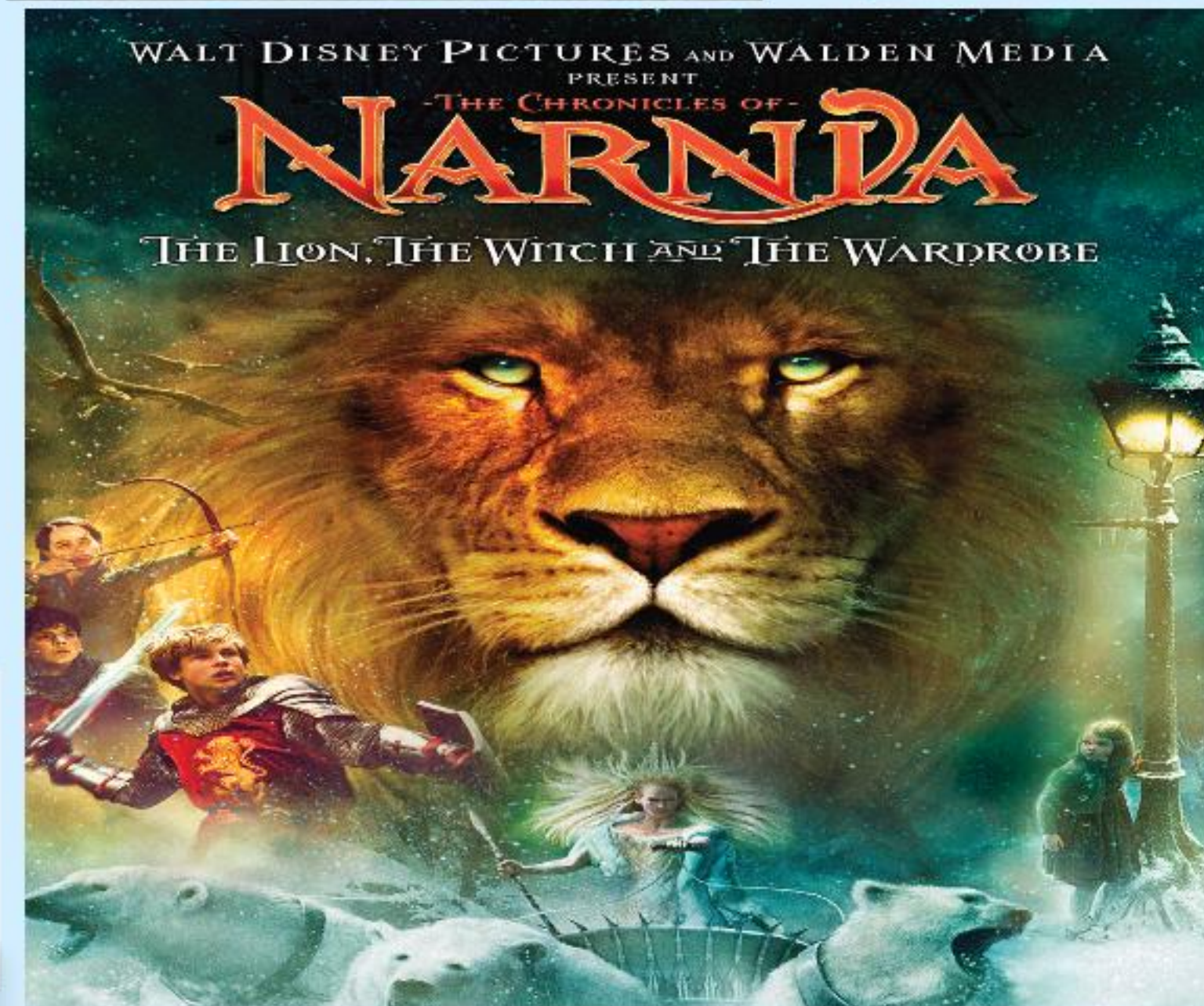
Full Y4 curriculum information on website.

Year 4										
		9.00 9.30	9.30 10.30	10.30 10.45	10.45 12.00	12.00 12.50	1.00 1.20	1.20 2.20	2.20 3.00	3.00 3.15
Mon	Register	Guided Reading	English	Hand wash/ break	Maths	Lunch	Spelling	History/Geography	Assembly	Class Novel
Tues	Register	PPA/PE		Hand wash/ break	PPA/PE (11.30)	Lunch	Spelling	Literacy		Class Novel
					French Class Novel			Maths		
Wed	Register	Guided Reading	English	Hand wash/ break	Maths	Lunch	Spelling	Science	Music/PHSE	Class Novel
Thurs	Register	Guided Reading	English	Hand wash/ break	Maths	Lunch	Homework tests	Science	RE/Computing	Class Novel
Fri	Register	Guided Reading	English	Hand wash/ break	Maths	Lunch	Handwriting	Art/DT	Assembly	Class Novel





What do we read and  
watch in Literacy?





## Year 4 x table checker

- June 2024
- 25 questions
- 6 seconds



### MULTIPLICATION

<b>1x</b> 1x0=0 1x1=1 1x2=2 1x3=3 1x4=4 1x5=5 1x6=6 1x7=7 1x8=8 1x9=9 1x10=10 1x11=11 1x12=12	<b>2x</b> 2x0=0 2x1=2 2x2=4 2x3=6 2x4=8 2x5=10 2x6=12 2x7=14 2x8=16 2x9=18 2x10=20 2x11=22 2x12=24	<b>3x</b> 3x0=0 3x1=3 3x2=6 3x3=9 3x4=12 3x5=15 3x6=18 3x7=21 3x8=24 3x9=27 3x10=30 3x11=33 3x12=36	<b>4x</b> 4x0=0 4x1=4 4x2=8 4x3=12 4x4=16 4x5=20 4x6=24 4x7=28 4x8=32 4x9=36 4x10=40 4x11=44 4x12=48
<b>5x</b> 5x0=0 5x1=5 5x2=10 5x3=15 5x4=20 5x5=25 5x6=30 5x7=35 5x8=40 5x9=45 5x10=50 5x11=55 5x12=60	<b>6x</b> 6x0=0 6x1=6 6x2=12 6x3=18 6x4=24 6x5=30 6x6=36 6x7=42 6x8=48 6x9=54 6x10=60 6x11=66 6x12=72	<b>7x</b> 7x0=0 7x1=7 7x2=14 7x3=21 7x4=28 7x5=35 7x6=42 7x7=49 7x8=56 7x9=63 7x10=70 7x11=77 7x12=84	<b>8x</b> 8x0=0 8x1=8 8x2=16 8x3=24 8x4=32 8x5=40 8x6=48 8x7=56 8x8=64 8x9=72 8x10=80 8x11=88 8x12=96
<b>9x</b> 9x0=0 9x1=9 9x2=18 9x3=27 9x4=36 9x5=45 9x6=54 9x7=63 9x8=72 9x9=81 9x10=90 9x11=99 9x12=108	<b>10x</b> 10x0=0 10x1=10 10x2=20 10x3=30 10x4=40 10x5=50 10x6=60 10x7=70 10x8=80 10x9=90 10x10=100 10x11=110 10x12=120	<b>11x</b> 11x0=0 11x1=11 11x2=22 11x3=33 11x4=44 11x5=55 11x6=66 11x7=77 11x8=88 11x9=99 11x10=110 11x11=121 11x12=132	<b>12x</b> 12x0=0 12x1=12 12x2=24 12x3=36 12x4=48 12x5=60 12x6=72 12x7=84 12x8=96 12x9=108 12x10=120 12x11=132 12x12=144





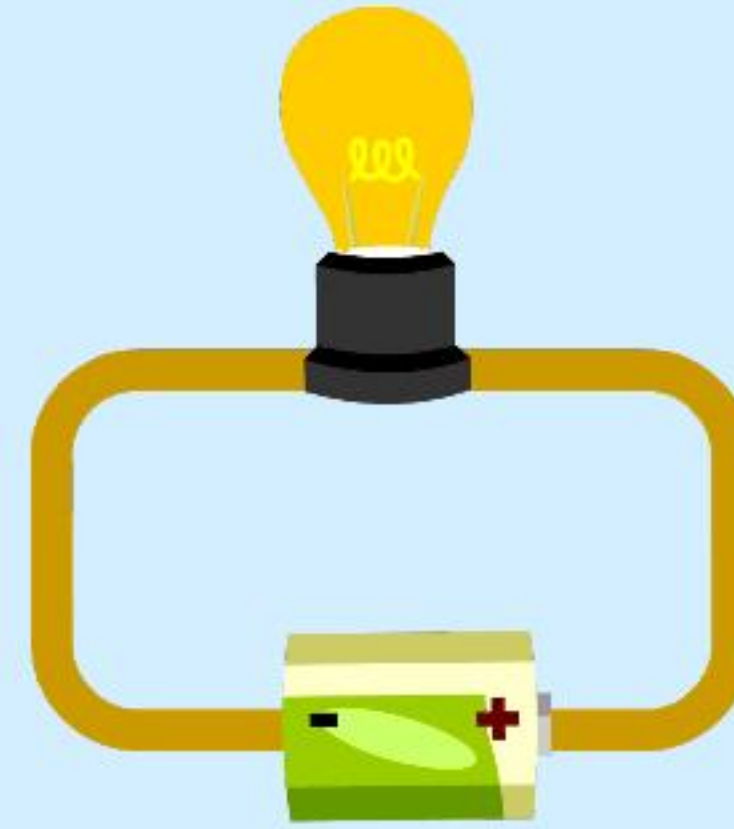
What is the pass mark for the national times tables test?

The children will not receive a formal pass mark – there is no expected pass rate or threshold. Despite this, the Department for Education will report on the performance of pupils in the assessment nationally and in each local authority. The results will not be posted publically.



## History/Geography

- The Romans
- Europe
- Manchester
- The Mayans
- The Normans and Castles



## Science

- Sound
- Electricity
- States of Matter
- Animals
- Humans



# Reading Records

In school EVERY DAY...

Lost book = £5

Lost RR = £3

Green Reader

Reading 5 times  
a week (Fri/Sat/Sun)  
in weekend reading.

Week Beginning: 5th September 2022

**Home Reading**

Monday

Tuesday

Wednesday

Thursday

Are you a Green Reader? ☺

Weekend Reading

**Reading at School**

Date and Initial

10

**Homework**

Maths

Spelling

Other

Maths

☐ Maths Homework complete and returned

☐ Maths incomplete

☐ Maths not returned

Spelling:

☐ Spelling Homework complete and returned

☐ Spelling incomplete

☐ Spelling not returned

Teacher Signature:

Parent Comment/ Signature

Spelling Score

**Word Aware**

11

Spelling

Our weekly spelling will  
be placed here and children's  
spelling test results.

Maths Homework

Based around X tables and  
maths focuses.

Extra Online Learning

Logins found at back of  
Reading Record.

Homework Handed In

Signature





This year we are continuing our whole school focus on Vocabulary.  
We aim to get the children excited about exploring vocabulary as well as incorporating the teaching of specific words through our curriculum.  
You will see a section for 'Word Aware' words in your child's reading record.  
This will be used to show the focus words for the week.  
Ask your child about the words when they begin to appear and discuss any interesting vocabulary when doing daily reading.



PE

White t-shirt, black  
shorts and pumps.  
Plain black  
tracksuit.



TuesDay

Please label  
everything.





# School fund

50p donations to school fund will be used to help enhance the curriculum – making mosaics in art, stationery pots and healthy snack bars in D&T.





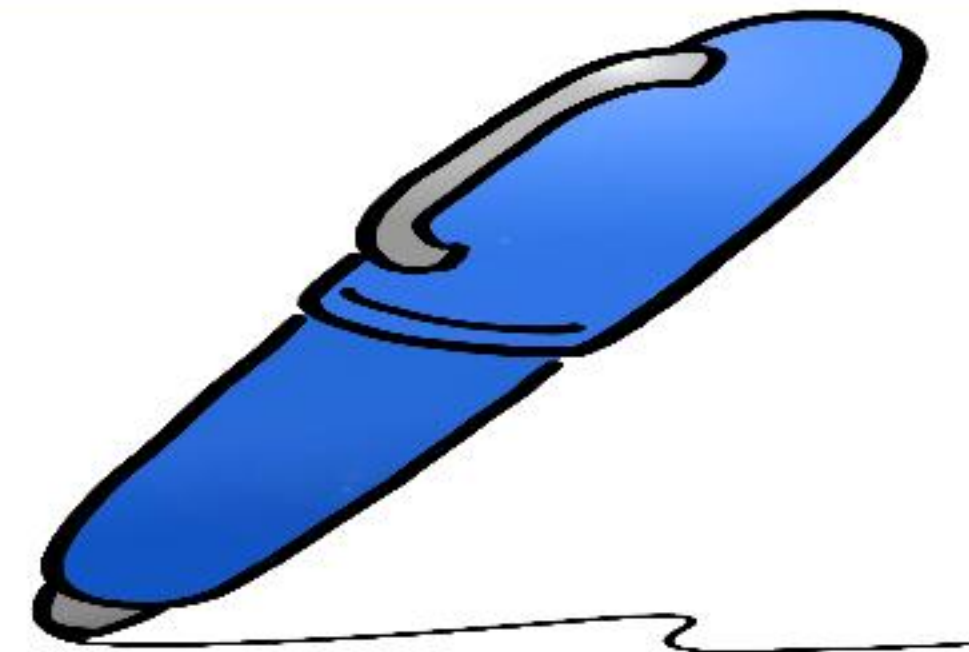


Rewards

Gold  
Cards!



STAR OF THE  
WEEK







If you have any questions, please feel free to ask them and enjoy looking around our classroom.







